



West End Mill

- The original 1884 brick mill was designed by the renowned Boston engineering firm of [Lockwood and Greene](#). Subsequent additions to the mill occurred in 1895 and 1910.
- The mill village included 81 one-story and 26 two-story frame mill houses, constructed between 1884 and 1910 by the mill for the factory operatives and their families. The houses were sold by the mill in the 1940s to individual families.

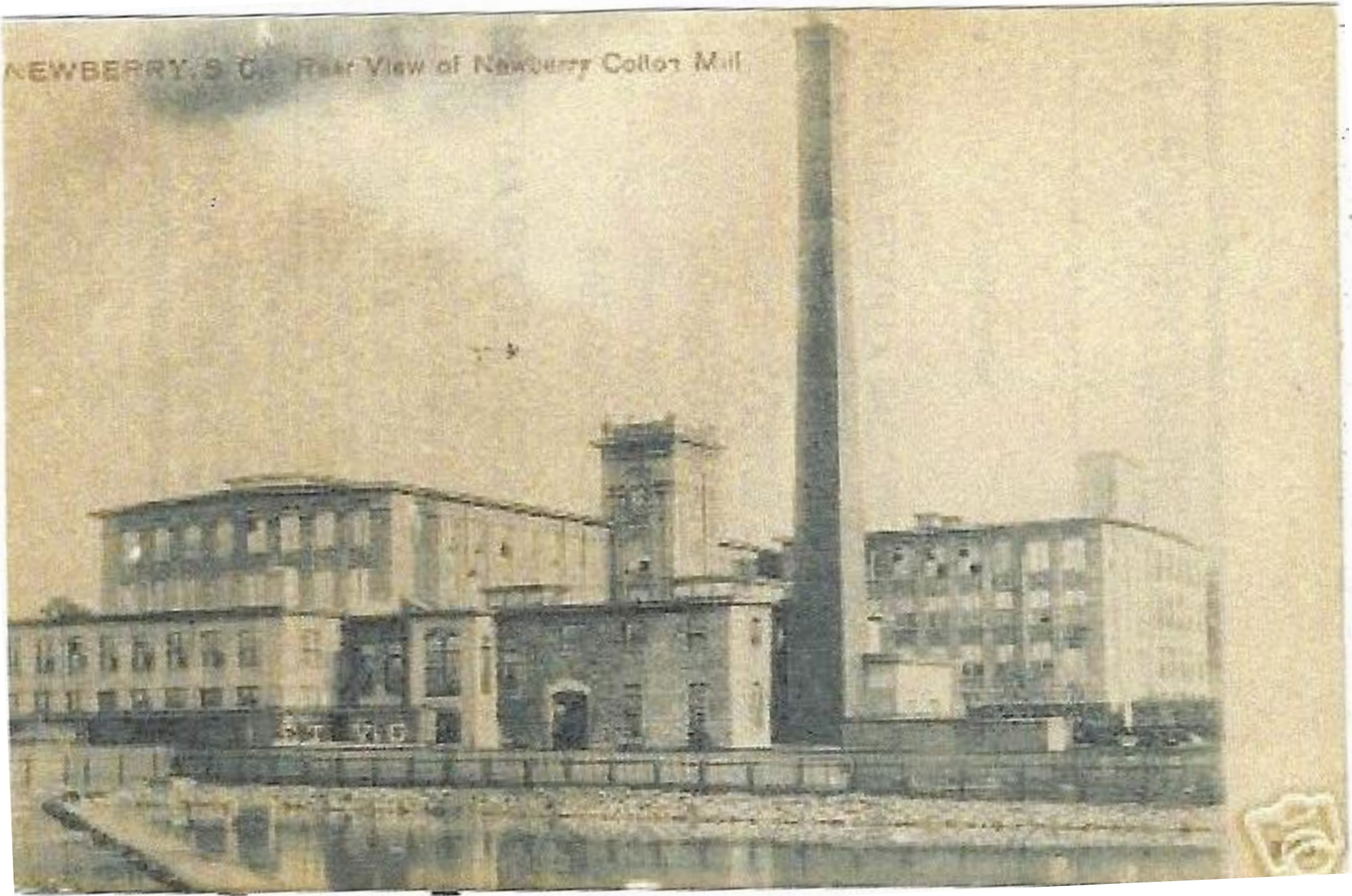


Greetings
from Newberry S. C.

Newberry Cotton Mill

Tuesday Afternoon

NEWBERRY, S. C. Rear View of Newberry Cotton Mill



- Newberry Cotton Mills, which was incorporated in 1882, was the first large-scale industry in Newberry County.
- Within a few years the plant was operating 320 looms and 10,000 spindles with a work force of 250 employees.
- The success of this cotton mill created interest in other mills and industries relating to cotton and agriculture.
- The mill closed in 1982 and the building was razed in 1990.

This desk and chair came from Newberry Mills and can be experienced in person at the Newberry Museum.



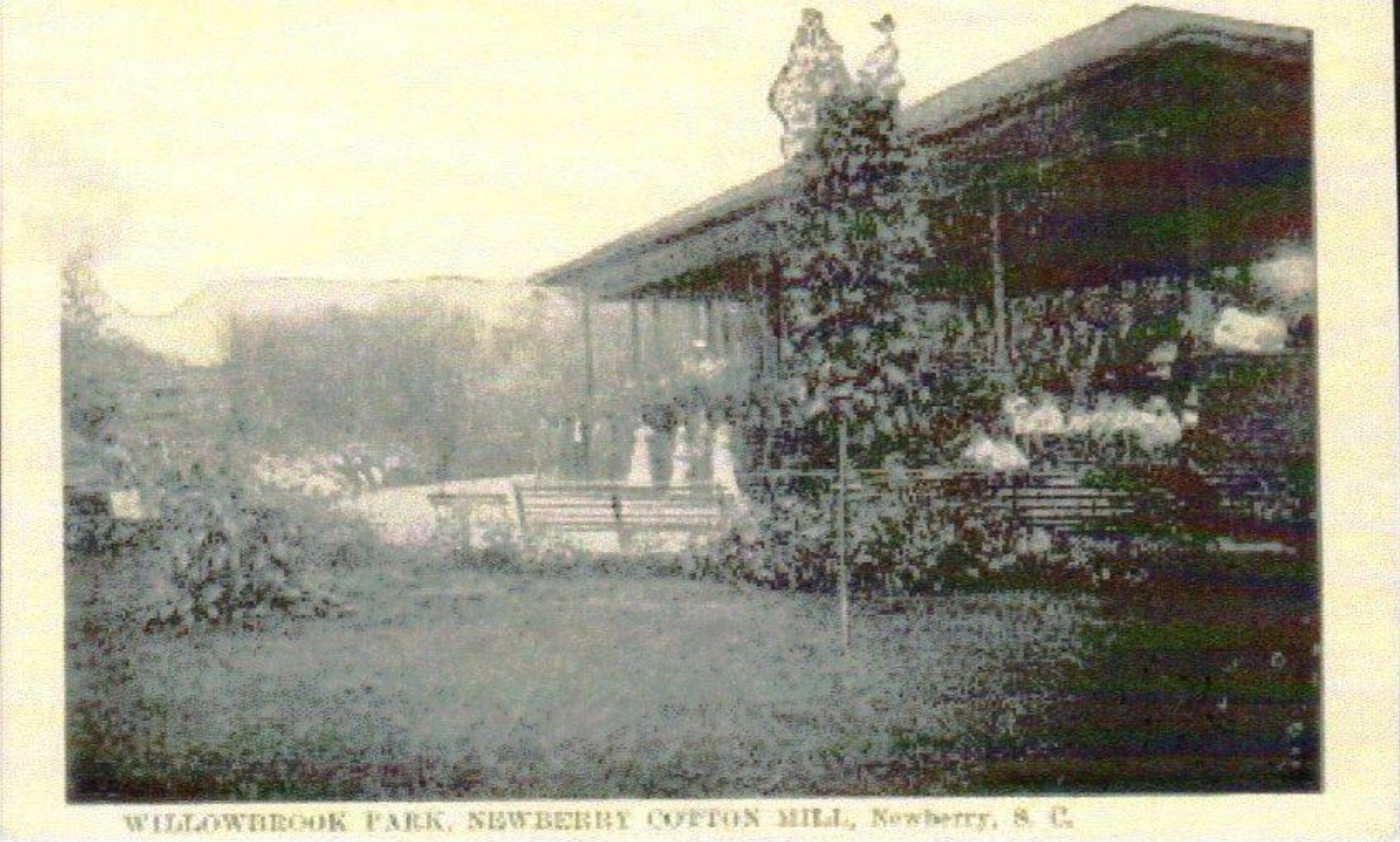
This shuttle lamp was made from shuttles from Newberry Mills. Shuttles were used to carry the thread-wrapped pirn in the weaving process.



Boundary
Street Looking
West



Crowd at Willowbrook Park



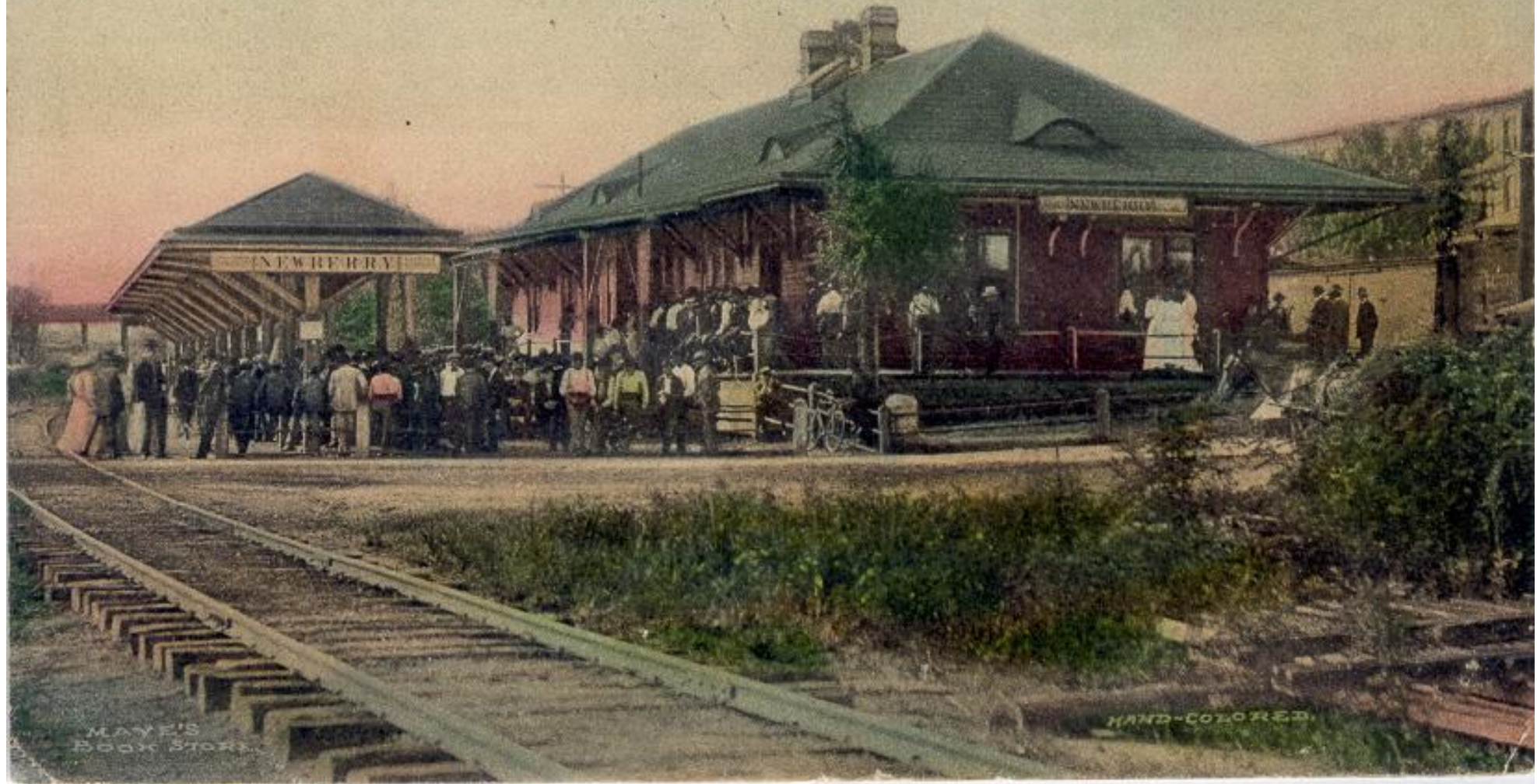
WILLOWBROOK PARK, NEWBERRY COTTON MILL, Newberry, S. C.



5051 Bird's Eye View of Newberry, S. C.



UNION STATION.
NEWBERRY, S.C.



MAYE'S
BOOK STORE

HAND-COLORED



West End School



“The mill pays for all the school expenses, including teacher salaries.”

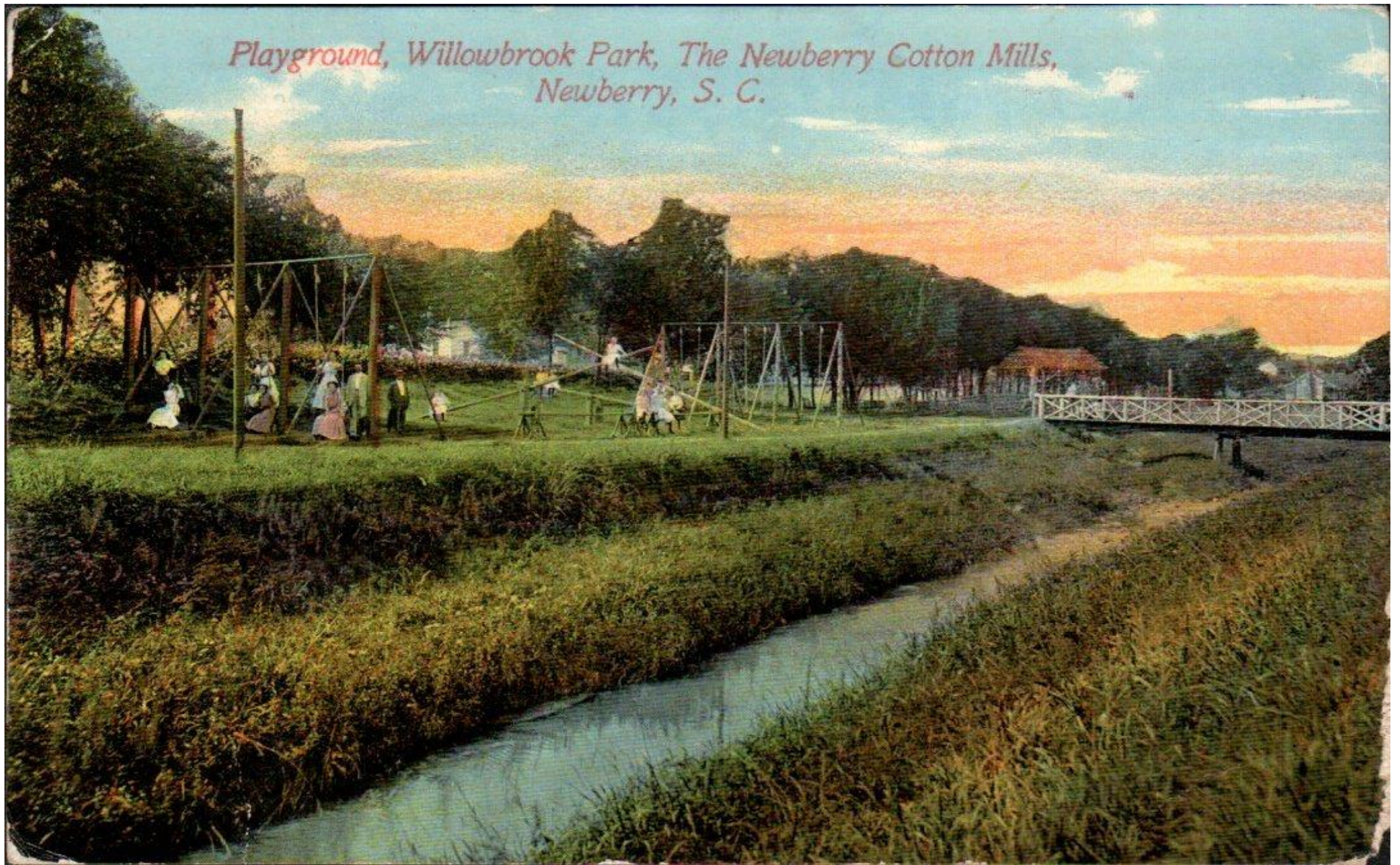
“The school is the heart of the mill village.”

Pavilion at Willowbrook Park





*Playground, Willowbrook Park, The Newberry Cotton Mills,
Newberry, S. C.*



The Bride of West End



Rustic Bridge, Willowbrook Park,
The Newberry Cotton Mills,
Newberry, S. C.





36 14

**NEWBERRY
COTTON MILLS**

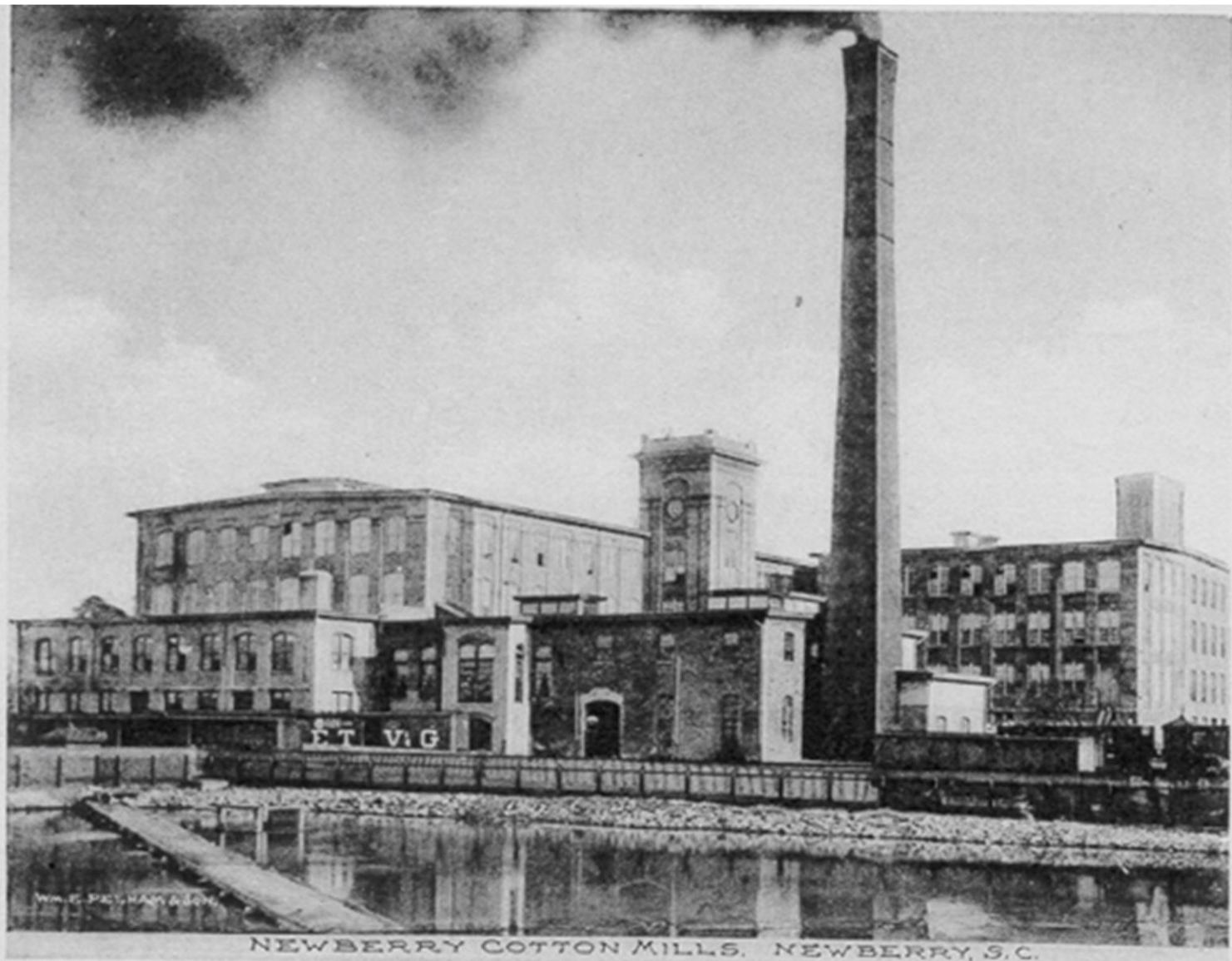
Newberry Cotton Mills,
incorporated in 1882, began
operation in 1885. The mill
was designed by prominent
textile mill architects
Lockwood, Greene, & Co. and
was one of the first cotton
mills in the United States
operated by steam power.
Z. F. Wright, who served as
president 1905-1947, was
responsible for several
expansions. Newberry Cotton
Mills, which also sponsored
the Newberry Concert Band,
1906-1968, closed in 1932.

DESIGNED BY J. W. WRIGHT IN 1906, RELOCATED IN 1932



W. L. JAMES & SON,

COTTON PICKING SCENE, NEWBERRY, S.C.




NEWBERRY COTTON MILLS. NEWBERRY, S.C.








 City of
Newberry
SOUTH CAROLINA
Park System

Scotts Creek Greenway

The greenway is 0.6 miles from O'Neal Street to Drayton Street. **EST. 2000**

 TRAILS

This project received funding from the National Recreational Trails Program in cooperation with the South Carolina Trails Program and the Federal Highway Administration.

Gallman School



Mayer Memorial



Newberry Middle School



Newberry County Central Court, Magistrates' Office



O'Neal Street Methodist







West End
Baptist



Many thanks to the Newberry
County Museum, Woody Jones,
and Ron Halfacre for help in
producing this show!

Music: <https://www.bensound.com>